

Zamansky Tower:

Presentation of the reception areas



MARCH 2024

Contents

1. PRESENTATION OF THE ZAMANSKY TOWER RECEPTION AREAS

Location and hours

2. THE PANORAMIC ROOM (ROOM 2400)

Presentation of spaces and equipment

3. THE PANORAMA ROOM (ROOM 2402)

Presentation of spaces and equipment

4. FLOOR PLAN

5. CONTACTS AND OTHER SPACES

Book a space at the CICSU; discover the other spaces of Sorbonne University

Presentation

Zamansky Tower is located on the Pierre and Marie Curie Campus

(4, place Jussieu), in the 5th arrondissement of Paris, in the heart of the Latin Quarter.

The 24th and top floor of the tower houses reception areas that offer a panoramic view of Paris.

The campus is accessible by car and public transportation:

- Metro: lines 7 and 10 (Jussieu stop)
- Bus: lines 63, 89, 67, 86, 87
- Free access to the Pierre and Marie Curie Campus parking lot on request and within the limits of available spaces.

Hours of availability for the spaces:

- Standard hours: 8:00 am - 6:00 pm (including set up and dismantling).
- On request: 7:30 am - 10:00 pm max. (including set-up and dismantling).



AERIAL VIEW FROM ZAMANSKY TOWER
Photo credits © Sorbonne University

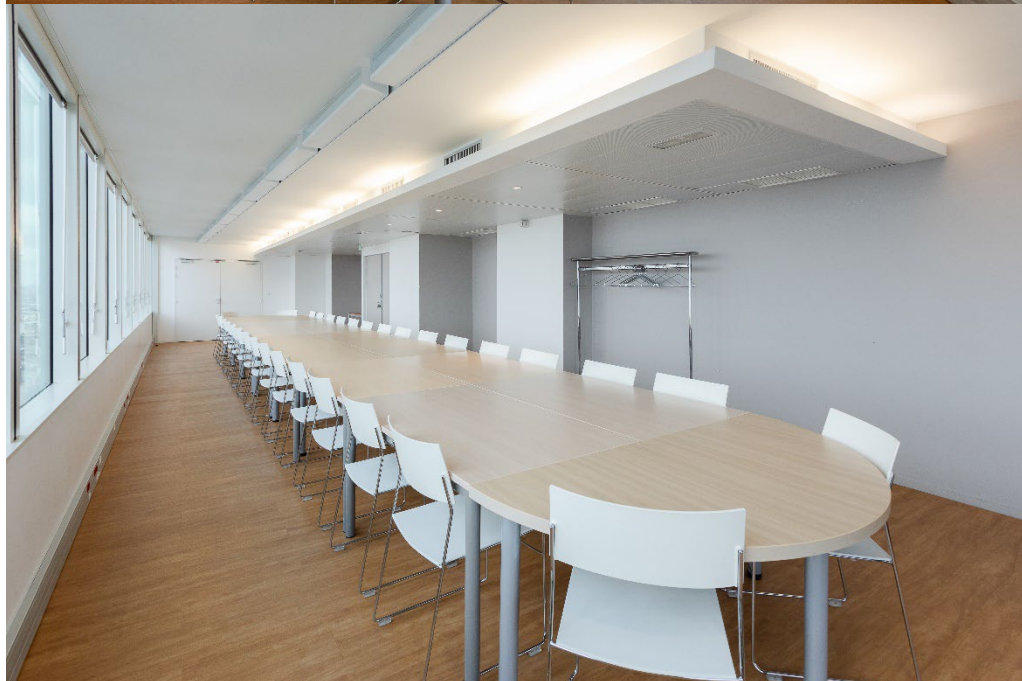
The panoramic room (Room 2400)

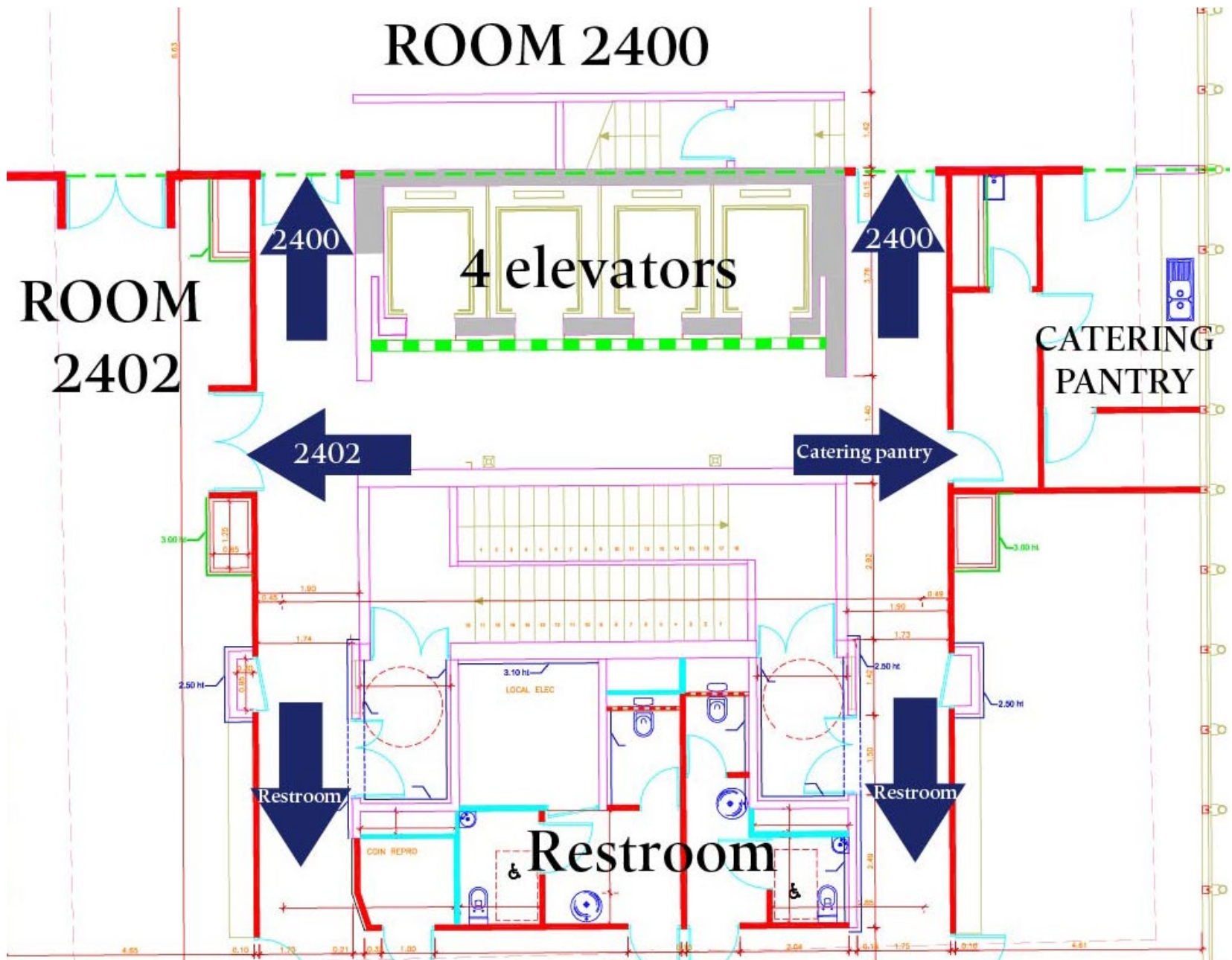
- Empty space of 139 m²
- Possible layouts:
 - cocktail mode (120-140 pax.)
 - theater mode (on request)
 - others layouts on request
- Furniture on request:
1 lectern, tables, chairs, coat racks
- Technical equipment on request: 1 giant touch screen and 1 microphone
- WiFi network on request
- 1 catering office equipped with a refrigerator and a sink



The panorama room (Room 2402)

- Meeting room: 32 seats - 68 sqm
- Audiovisual equipment on request: 1 video projector, 1 screen
- Furniture on request: tables, chairs, coat racks
- Video conferencing (on request)
- WiFi network on request





Contacts

Events and Space-Promotion Department

pole-event@sorbonne-universite.fr

Pierre and Marie Curie campus
4, place Jussieu – BC 616
75005 PARIS

Information and reservation :

<https://lime3-app3.sorbonne-universite.fr/index.php/378436?lang=fr>

Coordinator:

Melissa INGARGIOLA

Sales Manager

+33 (0)1 44 27 62 52

Melissa.ingargiola@sorbonne-universite.fr

Tech & Logistics Support:

Manuel MAYER

General Manager

+33 (0)1 44 27 82 39 /+33 (0)6 98 28 17 17

Manuel.mayer@sorbonne-universite.fr



VIEW FROM THE 24TH FLOOR OF THE ZAMANSKY TOWER
Photo credits © Sorbonne University

Other spaces

University spaces (managed by the Events and Space-Promotion Department of Sorbonne University)

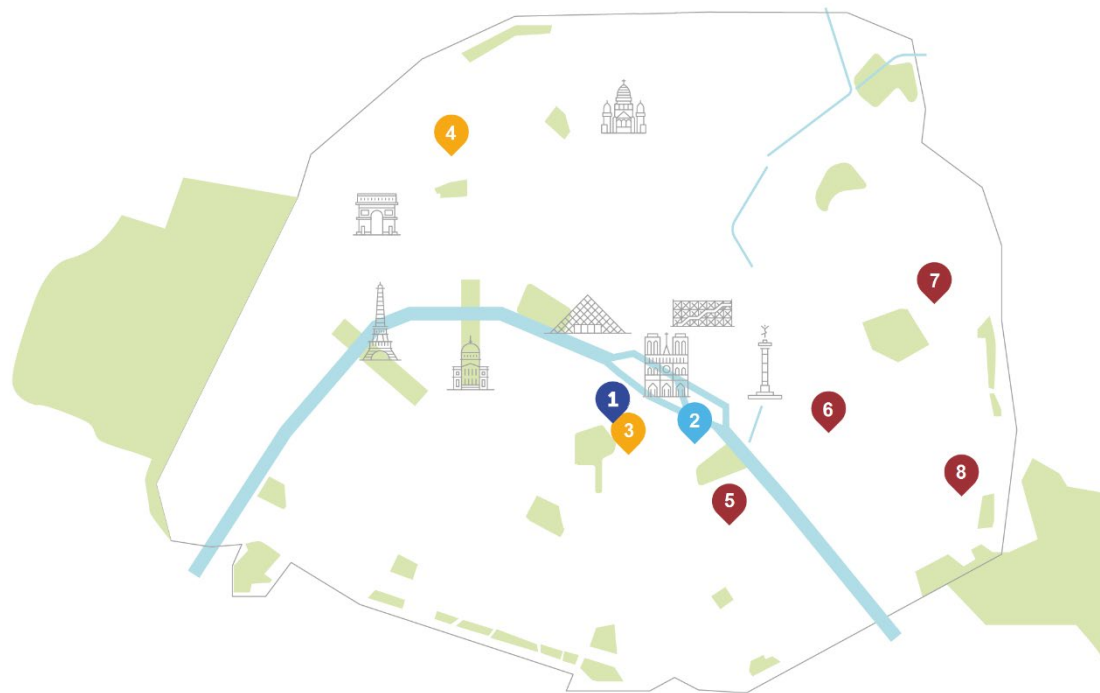
- SORBONNE UNIVERSITY INTERNATIONAL CONFERENCE CENTER (Pierre and Marie Curie campus)
- Cordeliers Campus

Faculty spaces (managed by the Sorbonne University Faculties)



- Faculty of Science and Engineering (Pierre and Marie Curie Campus): classrooms and amphitheater, meeting rooms in Zamansky Tower, Tipi, Caves Esclangon, exterior.
- Faculty of Medicine (Pitié Salpêtrière, St Antoine, Tenon and Trousseau sites): classrooms and amphitheater, reception areas.
- Faculty of Arts and Humanities (in Paris: Sorbonne and Malesherbes sites): classrooms and amphitheater, reception areas.

Information and contacts:

sorbonne-universite.fr/en/university/rental-conference-facilities



Key :

-  Faculty of Arts
-  Faculty of Medicine
-  Faculty of Science and Engineering

1. Cordeliers Campus- 15 rue de l'École-de-médecine, 75006 Paris
2. Pierre and Marie Curie campus - 4 place Jussieu, 75005 Paris
3. Sorbonne Campus - 1 rue Victor Cousin, 75005 Paris
4. Malesherbes Campus - 108 boulevard Malesherbes, 75017 Paris
5. Pitié-Salpêtrière Campus - 91 boulevard de l'hôpital, 75013 Paris
6. Saint-Antoine Campus - 27 rue de Chaligny, 75012 Paris
7. Tenon site - 4 rue de la Chine, 75020 Paris
8. Trousseau site - 26 avenue du Docteur Arnold-Netter, 75012 Paris

